

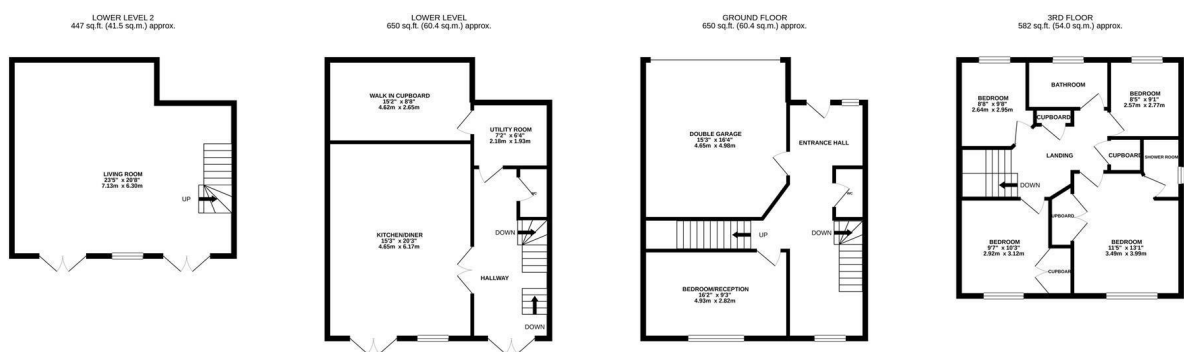


Helmsman Rise, St. Leonards-On-Sea TN38 8BQ

Offers in excess of £475,000



Extremely spacious five bedroom DETACHED FAMILY HOME set in a prestigious development on the outskirts of St. Leonards within CLOSE REACH OF BATTLE where there is a mainline railway station and favoured schools such as Claverham Community College. Spanning FOUR STOREYS the accommodation here enjoys a VERSATILE LAYOUT with generous proportions. The entrance level offers access in to the INTEGRAL DOUBLE GARAGE, there is a cloakroom and bedroom 5 or a potential reception area. The floor below houses a large eat in kitchen which measures 20'3 x 15'3 with double doors opening on to a RAISED DECK perfect for al-fresco dining. There is a SEPARATE UTILITY ROOM, a large walk in storage cupboard and a handy cloakroom also on this level. Sat on the lowest floor there is a well proportioned living room with two sets of patio doors leading out to the garden where there is a sheltered patio area and an established expanse of lawn bordered by flower beds. There are four bedrooms on the uppermost level along with a family bathroom, the main bedroom boasts an EN-SUITE SHOWER ROOM and BUILT IN STORAGE SPACE. This fantastic home it PRESENTED TO AN IMPECCABLE STANDARD throughout, it was the FORMER SHOW HOME meaning that it offers larger than expected gardens and accommodation. There is AMPLE OFF ROAD PARKING to the front which leads to the double garage where there is an electric up and over door.



TOTAL FLOOR AREA : 2329 sq.ft. (216.4 sq.m.) approx.

Whilst every attempt has been made to ensure the accuracy of the floorplan contained here, measurements of doors, windows, rooms and any other items are approximate and no responsibility is taken for any error, omission or mis-statement. This plan is for illustrative purposes only and should be used as such by any prospective purchaser. The services, systems and appliances shown have not been tested and no guarantee as to their operability or efficiency can be given.

Made with Metropix ©2020

